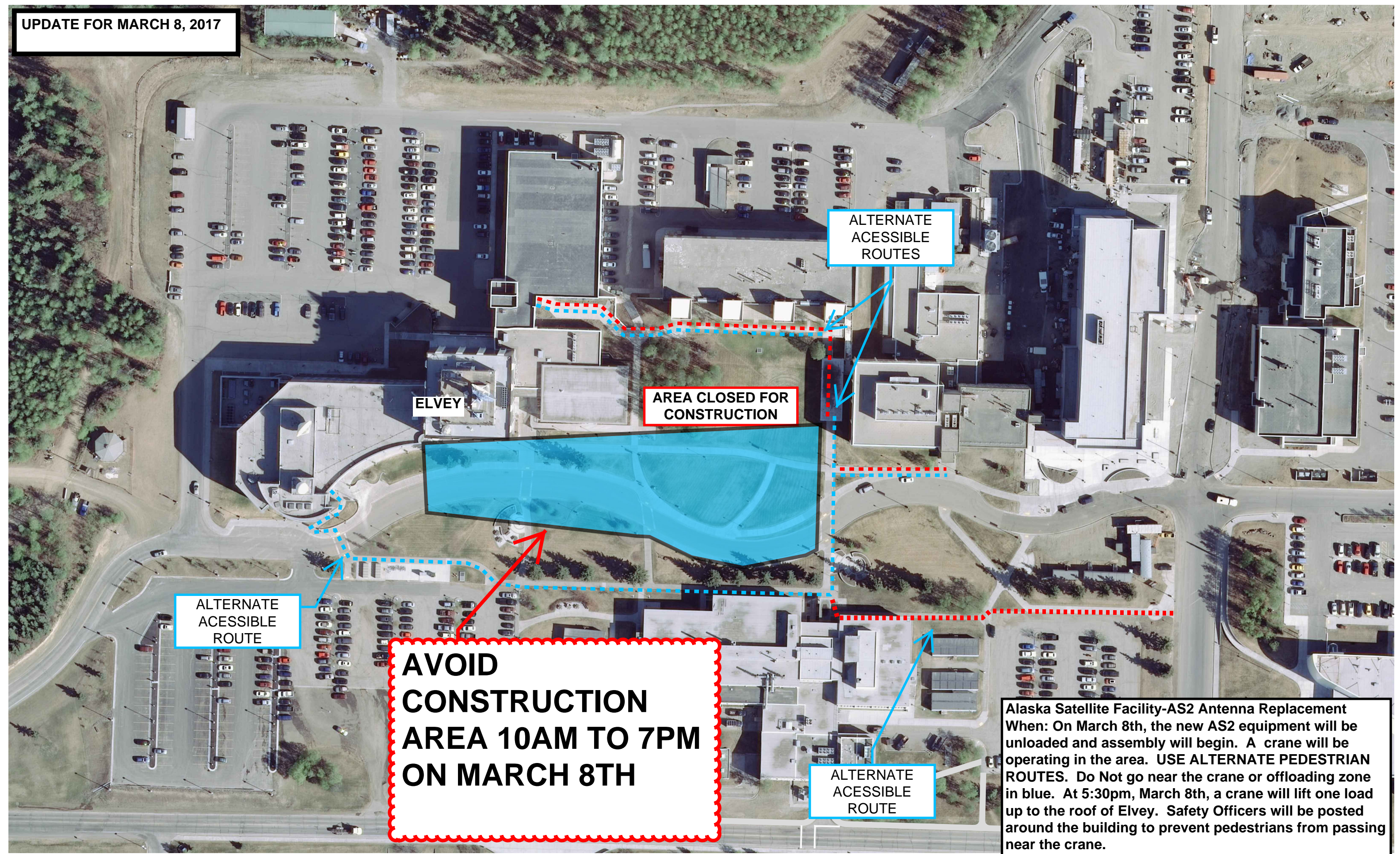


UPDATE FOR MARCH 8, 2017



ALTERNATE ACCESSIBLE ROUTES

AREA CLOSED FOR CONSTRUCTION

ELVEY

ALTERNATE ACCESSIBLE ROUTE

**AVOID CONSTRUCTION AREA 10AM TO 7PM ON MARCH 8TH**

ALTERNATE ACCESSIBLE ROUTE

Alaska Satellite Facility-AS2 Antenna Replacement  
When: On March 8th, the new AS2 equipment will be unloaded and assembly will begin. A crane will be operating in the area. **USE ALTERNATE PEDESTRIAN ROUTES.** Do Not go near the crane or offloading zone in blue. At 5:30pm, March 8th, a crane will lift one load up to the roof of Elvey. Safety Officers will be posted around the building to prevent pedestrians from passing near the crane.

